



MUNICIPAL CLASS ENVIRONMENTAL ASSESSMENT FOR REPLACEMENT OF THE MCCURDY BRIDGE COUNTY OF BRUCE

PUBLIC MEETING NOTICE

THE PROJECT

In April 2013 the County of Bruce completed a Bridge Infrastructure Master Plan which identified outcomes for a group of county-owned bridges spanning the Teeswater and Saugeen Rivers in central Bruce County. One of the structures included in the Master Plan was the McCurdy Bridge, which spans the Saugeen River on the Brant Elderslie Road approximately 2 kms east of County Road 3 (as shown on the accompanying key plan). The McCurdy Bridge is a single span, steel through truss bridge constructed circa 1913.

An outcome of the Master Plan was the recommendation for the replacement of the McCurdy Bridge. Additional Environmental Assessment review was required prior to replacement of the McCurdy Bridge. Utilizing the Environmental Assessment planning and design process, the County has identified a preliminary preferred alternative for the McCurdy Bridge crossing. The County proposes to construct a new crossing located approximately 50 metres south of the existing bridge, retaining the existing span for use by pedestrians and off-road vehicles. Construction is tentatively planned for the 2016 construction season.

THE ENVIRONMENTAL ASSESSMENT PROCESS:

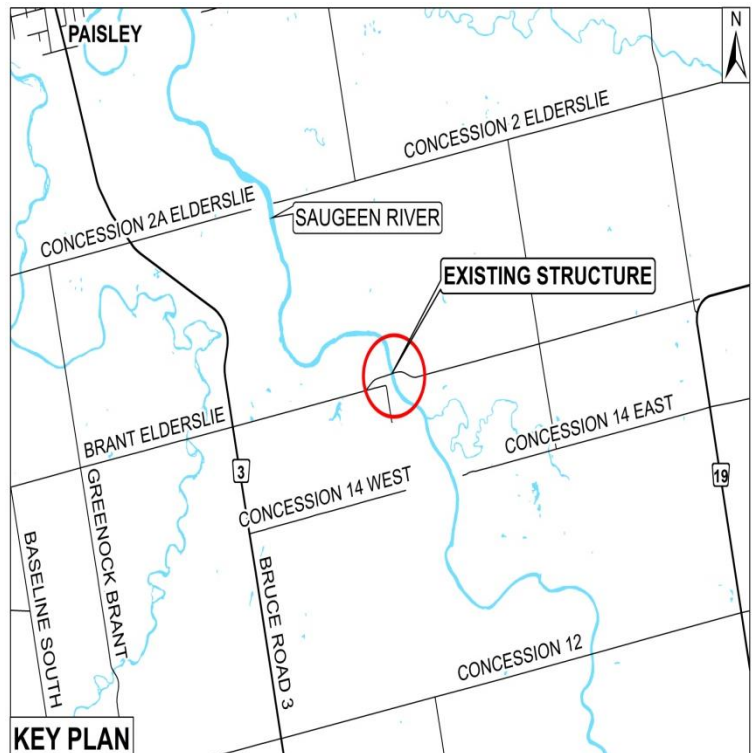
The planning for this project is following the environmental planning and design process set out for Schedule 'C' activities under the Municipal Class Environmental Assessment (Class EA) process, which is an approved process under the Environmental Assessment Act. The purpose of the Class EA planning and design process is to identify any potential environmental impact associated with the proposed works and to plan for appropriate mitigation of any identified impacts. This process includes consultation with the general public, government review agencies and affected property owners.

PUBLIC INVOLVEMENT:

Public consultation is a key component of this study. A **Public Information Centre** has been scheduled to advise residents of the current status of the project and to receive additional input from interested parties.

Details of the Public Information Centre are as follows:

Date: Wednesday February 3, 2016
Time: 6:00 - 8:00 p.m.
Presentation: 6:30 p.m.
Location: Paisley Community Centre, 391 Queen Street North, Paisley



Following the meeting, input into the Class EA will be accepted until **March 4, 2016**. Comments collected in conjunction with this Class EA Schedule 'C' process will be maintained on file for use during the project and may be included in project documentation. With the exception of personal information, all comments will become part of the public record. For further information on this project, or to review the MEA Class EA process, please contact the project engineers: B.M. Ross and Associates: 62 North Street, Goderich, Ontario, N7A 2T4. Telephone (Toll Free): (888) 524-2641. Fax: (519) 524-4403. Kelly Vader, Environmental Planner (e-mail: kvader@bmross.net).

This Notice Issued January 27, 2016
Brian Knox, P. Eng.
County Engineer