



COUNTY OF BRUCE

MUNICIPAL CLASS ENVIRONMENTAL ASSESSMENT SCHEDULE "C"

REPLACEMENT OF MCCURDY BRIDGE

NOTICE OF STUDY COMPLETION

THE PROJECT:

In April 2013 the County of Bruce completed a Bridge Infrastructure Master Plan which identified outcomes for a group of county-owned bridges spanning the Teeswater and Saugeen Rivers in central Bruce County. One of the structures included in the Master Plan was the McCurdy Bridge, which spans the Saugeen River on the Brant Elderslie Road approximately 2 km east of County Road 3 (as shown on the accompanying key plan). The McCurdy Bridge is a single span, steel through truss bridge constructed circa 1913.

The McCurdy Bridge was recommended for replacement in conjunction with the Master Plan. Additional Environmental Assessment review was required prior to implementation of this component of the Master Plan recommendations and that process has now been completed. The County of Bruce has identified a preferred alternative for replacement of the crossing, to construct a new bridge at a location approximately 50 metres south of the existing structure, retaining the original steel truss bridge for potential use as a recreational crossing.

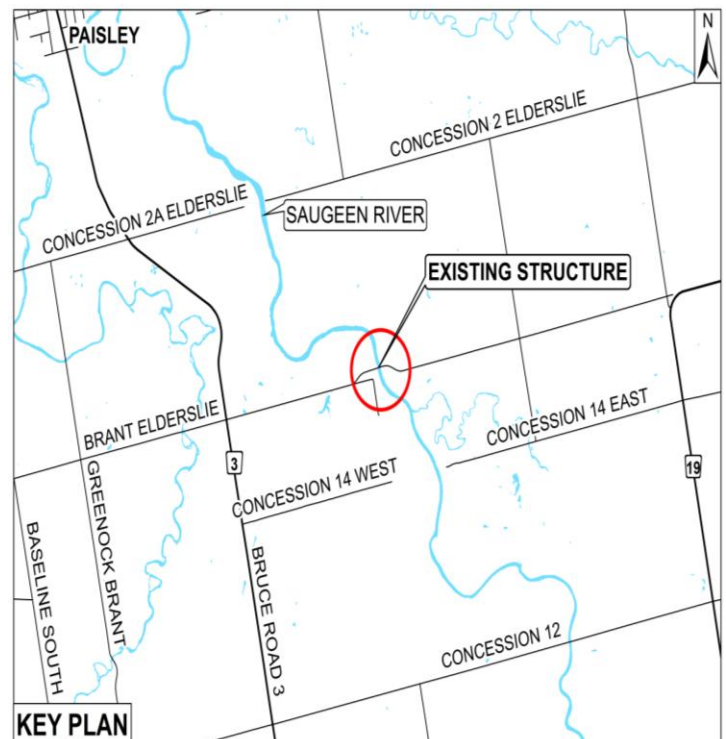
THE ENVIRONMENTAL ASSESSMENT PROCESS:

The planning for this project is following the planning process established for Schedule "C" activities as described in the Municipal Engineers Association's Municipal Class Environmental Assessment (EA) document (approved October 2000, as amended in 2007 and 2011). The purpose of the Environmental Assessment process is to identify any potential environmental impacts associated with the project and to plan for appropriate mitigation of any impacts. The Class EA process has now been completed. There were no impacts identified for this project that could not be mitigated.

PUBLIC INVOLVEMENT:

For further information on this project, please contact the consulting engineers: B.M. Ross and Associates, 62 North Street, Goderich, Ontario, N7A 2T4. Telephone: (519) 524-2641. Fax: (519) 524-4403. Attention: Kelly Vader, Environmental Planner (e-mail: kvader@bmross.net). An Environmental Study Report (ESR) documenting the environmental assessment process is available for public review at the Brockton Municipal Office (100 Scott St., Walkerton), the Arran-Elderslie Municipal Office (1925 Bruce Road #10, Chesley), and the Bruce County Highways Dept. (30 Park St., Walkerton) during normal hours of operation. Additional project information is also available on the Bruce County website (www.brucecounty.on.ca).

If environmental concerns arise regarding the project which cannot be resolved in discussion with the County of Bruce, a person or party may request that the Minister of the Environment and Climate Change make an order for the project to comply with Part II of the Environmental Assessment Act which addresses individual environmental assessments. Requests must be received by the Minister at the address below within 30 calendar days of this Notice. A copy of the request must also be sent to the project engineers at the address above. If there is no request received by **May 27th, 2016**, the project will proceed as planned.



Minister of the Environment and Climate Change
77 Wellesley St. W., 11th Floor, Ferguson Block
Toronto, ON M7A 2T5

Brian Knox, P. Eng., County Engineer

This Notice Issued April 27, 2016.